



DW-350

The Health Is Within Reach





15 inch LED liquid crystal display, angle range is more flexible to adjust

Back-lit keyboard silicon gel, more comfortable and wearable, no trouble in using in the darkroom

2 probe interfaces

All four casters are equipped with foot brakes



DW-350 is equipped with advanced imaging technologies to provide you with high-quality images and a convenient workflow allowing you to scan with confidence and ease. With its lightweight ergonomic mobile design, the DW-350 can accompany you wherever required.

Efficient Diagnosis

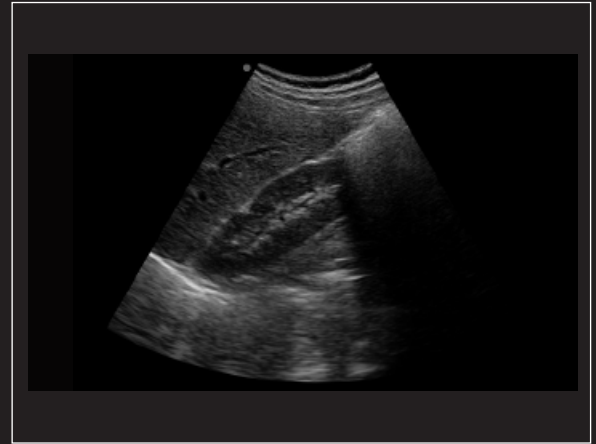
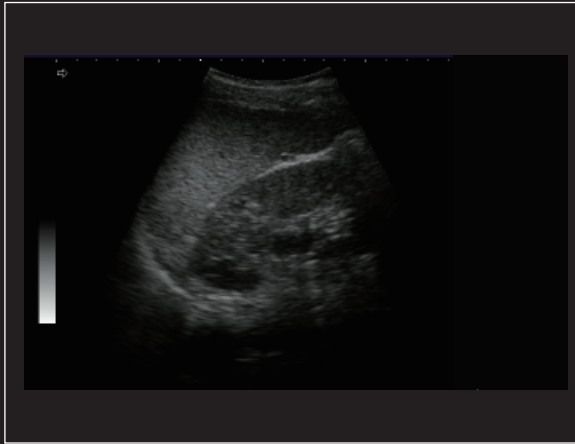
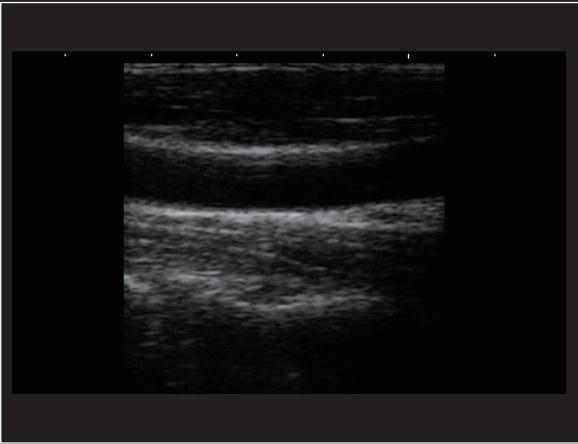
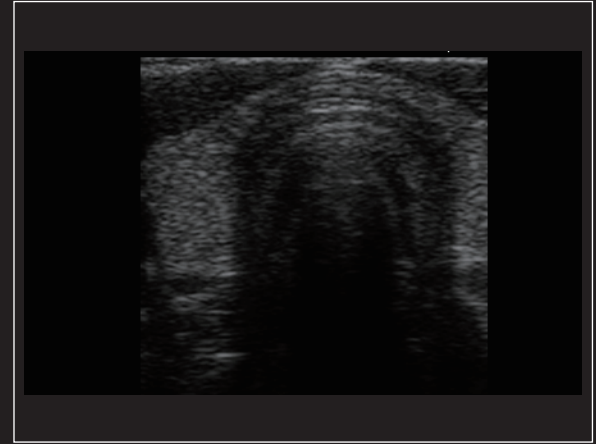
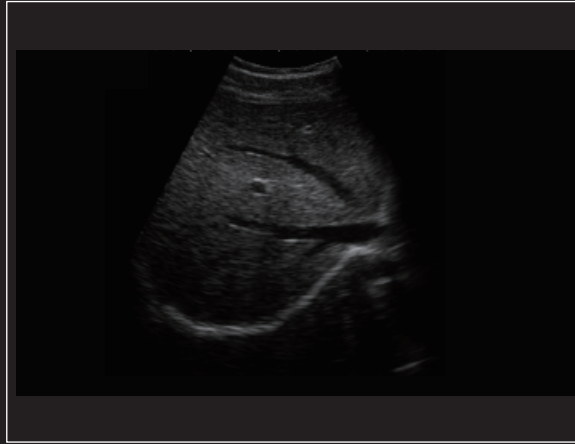
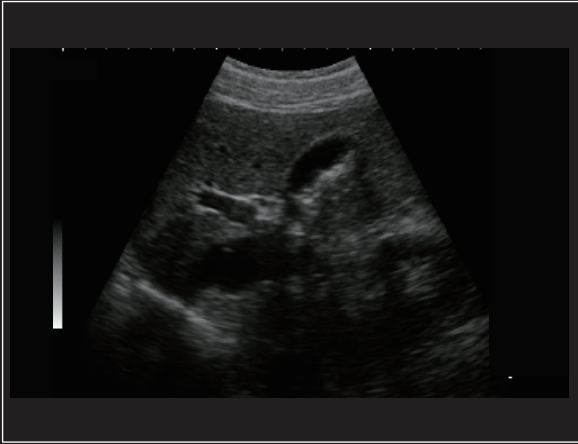
- The diagnostic instrument uses microcomputer control and digital scan converter (DSC).
- Uses digital beamforming (DBF).
- Real-time dynamic aperture imaging (RDA).
- Real-time dynamic sound velocity apodization (DRA).
- Real-time dynamic spot-Dynamic Frequency Scanning (DFS).
- Frame correlation and other technologies, the whole image is clear, stable, high resolution.
- With B, B + B, 4B, B + M, M five kinds of display modes; image grayscale 256.

Clinical applications

- With freeze, real-time scan, image rotation, flip around, black and white flip.
- 8 segments TGC adjustment.
- More than 90 kinds of body marks.
- Note function.
- Fixed characters and real-time clock, calendar display.
- Multi-language interface conversion.
- With focus and focus position adjustment function.



Clinical image cases





Part of the probe display



Convex probe

Application: Abdomen, Obstetrics,
Gynecology



Linear probe

Application: Small Parts, Vascular,
Musculoskeletal



Trans-vaginal probe

Application: Obstetrics, Gynecology,
Urology



Trans-rectal probe

Application: prostate gland



Micro-convex probe

Application: Small parts, baby organs