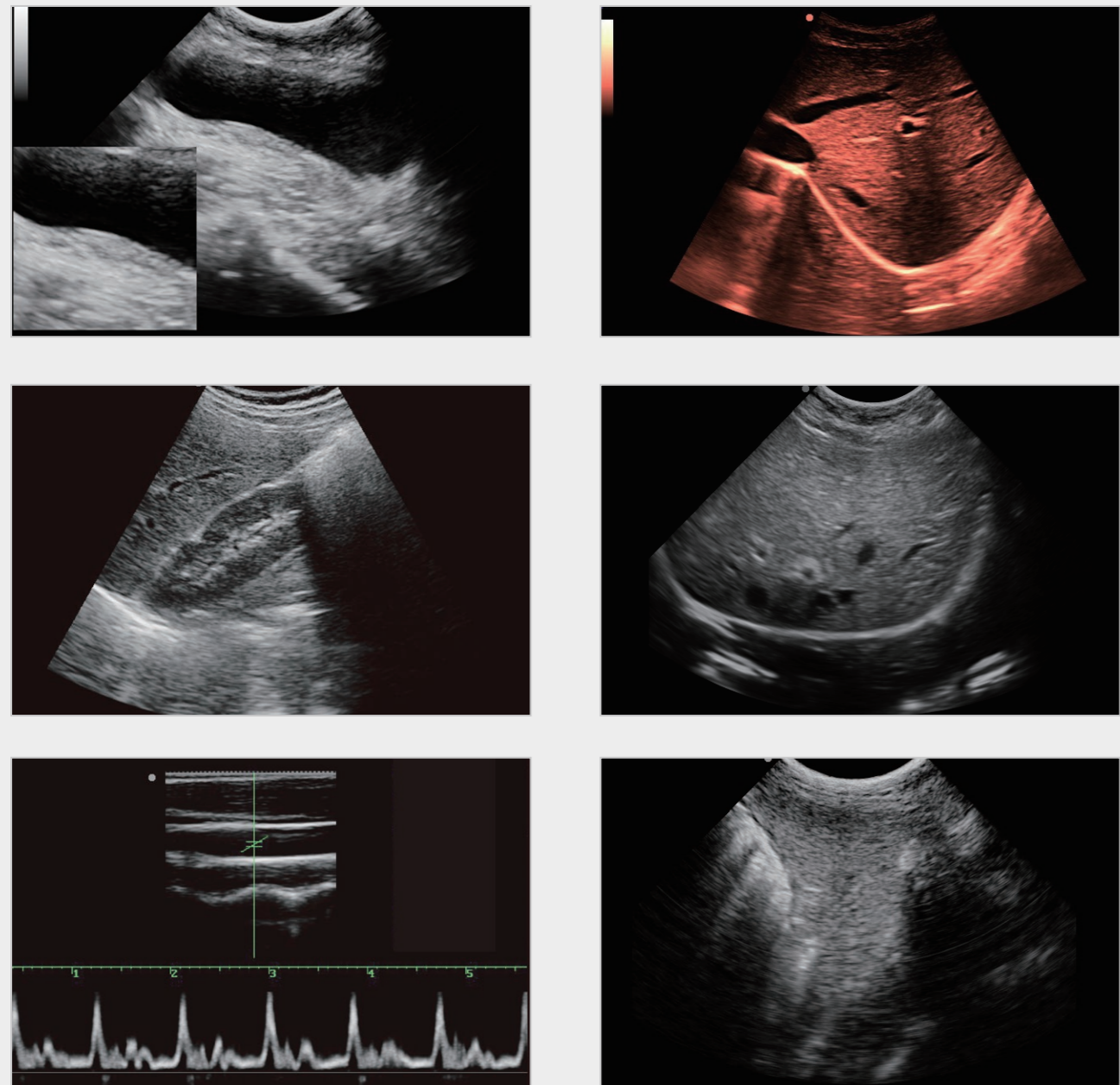
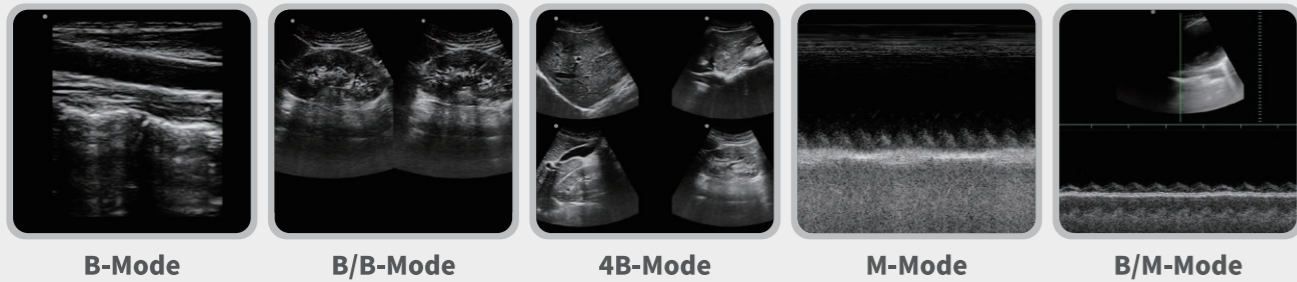


Accurate Imaging

DW-360



High-Density Probes, High Definition Images



Convex probe
Abdomen, obstetrics,
gynecology



Linear probe
Small Parts, Vascular,
Musculoskeletal



Micro-convex probe
Small parts, baby organs



Trans-vaginal probe
Obstetrics, gynecology,
urology



Trans-rectal probe
Prostate gland



www.ultrasounddawei.com



Accuracy

Versatility

Mobility

DW-360

PC PLATFORM FULL DIGITAL
BLACK AND WHITE ULTRASOUND
DIAGNOSTIC SYSTEM



PULSED-WAVE B/W ULTRASOUND SYSTEM

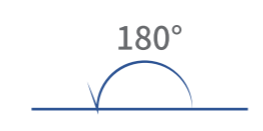
DW-360, the idea of balancing performance and portability to achieve reliable diagnosis in various clinical applications.

Clinical Applications

- Abdomen
- Gynecology
- Obstetrics
- Urology
- Pediatrics
- Small parts
- Vascular
- MSK



Slim Body, Super Endurance



15" LCD medical display with 180 degree expansion

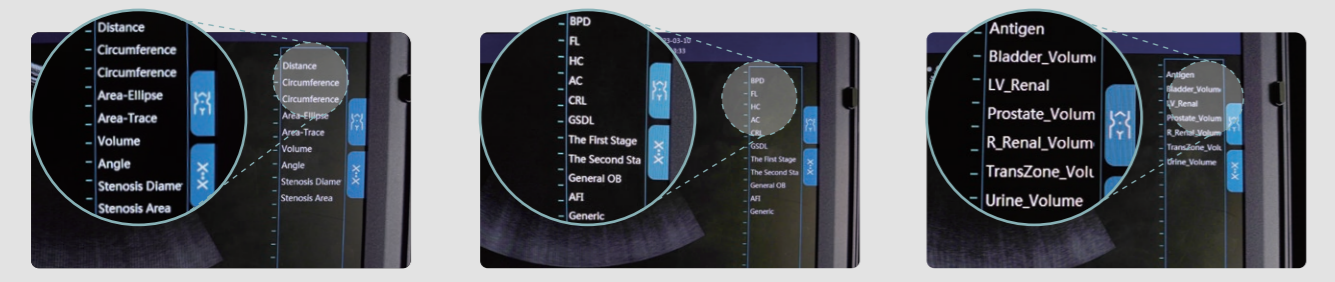


Powerful Endurance
Built-in high-capacity lithium battery



Valuable Measurement Tools

available in various clinical environment:
abdominal, gynecology , obstetrics, urology, cardiac



> HDMI, VGA, VIDEO, USB*2, DICOM



> All in one keyboard for easy operation

Efficient Workflow



Windows platform, stable operation



DICOM function, real-time data transmission

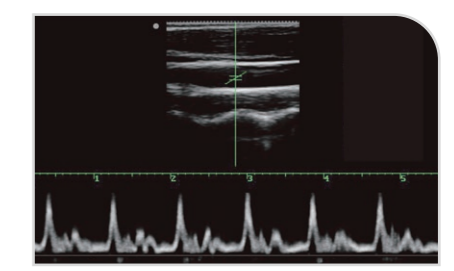
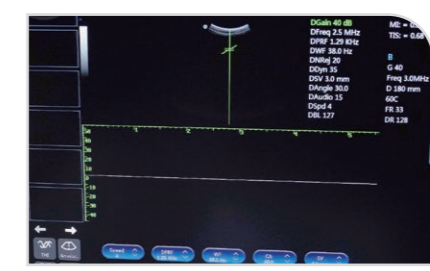


128G SSD, fast data storage

Image processing function

Pulsed-wave Doppler (PW)

Pulsed-wave (PW) is to change the characteristic of sound waves by moving objects. By sending short and quick pulses of sound, it becomes possible to accurately measure the velocity of blood in a precise location and in real time.



Pseude-color

It is a way to change the display mode of black and white images into color display. The sensitivity of the human eye to different echo intensities can be enhanced. Subjectively, the dynamic range of the display signal is increased, and the recognizability of the image boundary is enhanced

