

DW-360

Quality | Compact | Economy



Full digital ultrasonic diagnostic system

DW-MU15, humanized keyboard key design, convenient for users to operate; powerful workflow ability to bring users extraordinary experience; based on the PC platform operating system, bringing unlimited possibilities.

DW-MU15 brings you a unique user experience with its extraordinary creativity.



Innovative design

- 15.6-inch LCD medical monitor with high resolution and 180-degree open angle
- The slim body design weighs up to 6.7kg, allowing you to take it anywhere
- Humanized keyboard design to achieve deep integration with the machine



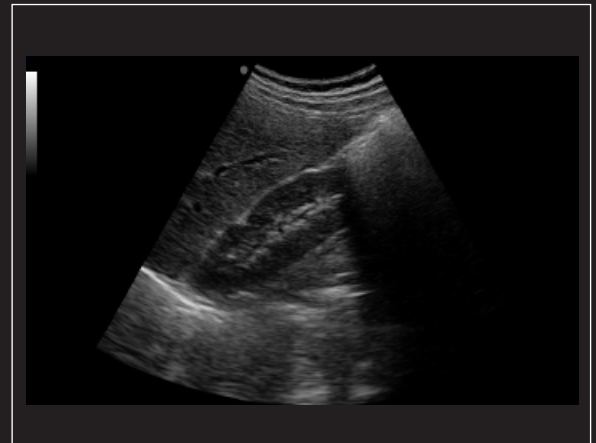
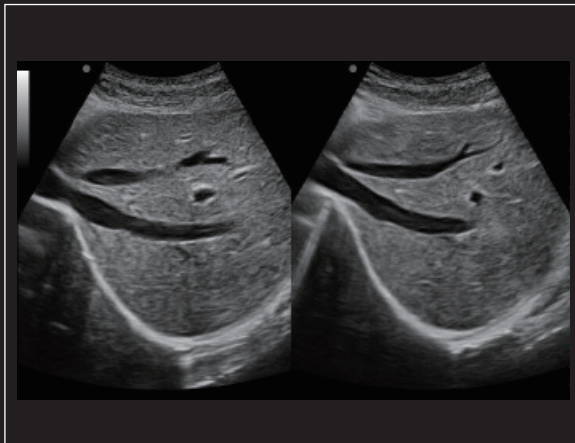
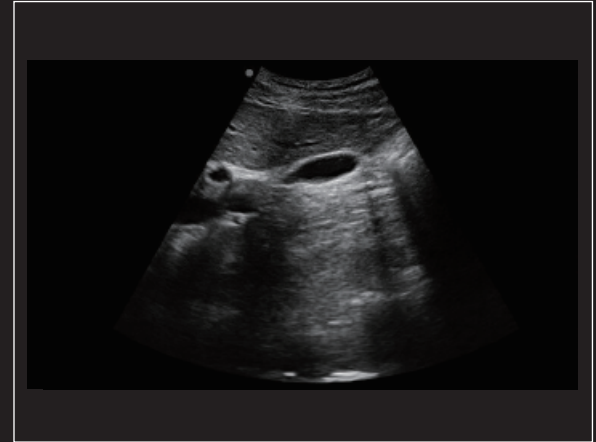
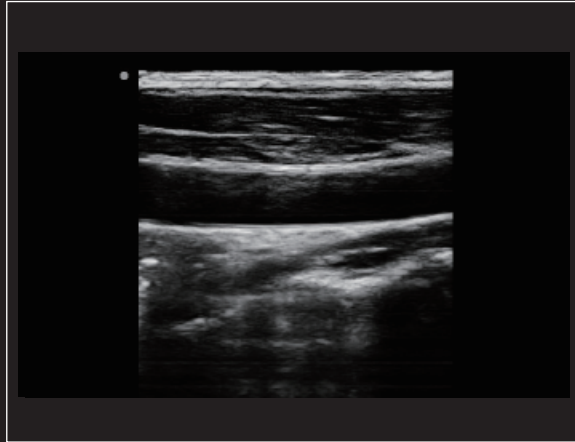
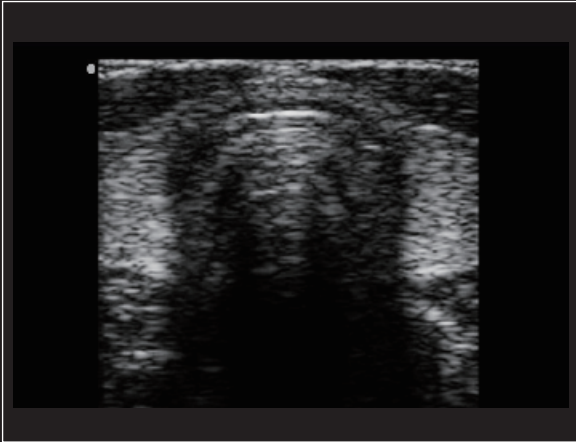
Outstanding Imaging Performance

- THI technology brings you high-quality image effects
- PW Doppler mode lets you know more about the mystery of beating
- Pseudo-color function makes the image no longer only have black and white

Flexible Workflow

- Various forms of data transmission via USB and DICOM
- One-key full-screen function brings you a clearer image look and feel
- Windows operating system makes printing and transmission more convenient

Clinical image cases





Convex probe

Application: Abdomen, Obstetrics,
Gynecology



Linear probe

Application: Small Parts, Vascular,
Musculoskeletal



Trans-rectal probe

Application: prostate gland



Micro-convex probe

Application: Small parts, baby organs



Trans-vaginal probe

Application: Obstetrics, Gynecology,
Urology

Part of the probe display
