

# DW-500

Meets Challenges Make the Difference



# Full digital ultrasonic diagnostic system

The DW-500 meets today's ultrasound market challenges by providing complete images solutions and an economic price. With its full digital technology and high-performance transducers can be a more accurate diagnosis of lesions. With a variety of simple and clear functions, make man-machine dialogue is more convenient and fast. It will meet your daily diagnostic requirements without compromising image quality and at an economic price.



---

---

## Innovative Design

- 12.1-inch professional medical LCD monitors make the images more intuitive.
- Multiple features allow doctors to respond to multiple needs.
- Support OB Report.
- Support Various pseudo-color.
- Display puncture guideline, angle and position adjustable.



## Efficient Diagnosis

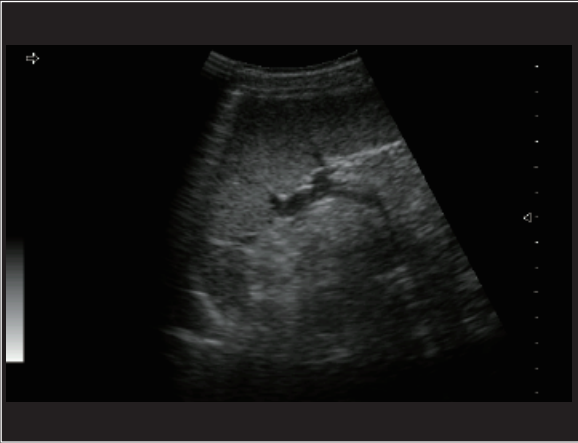
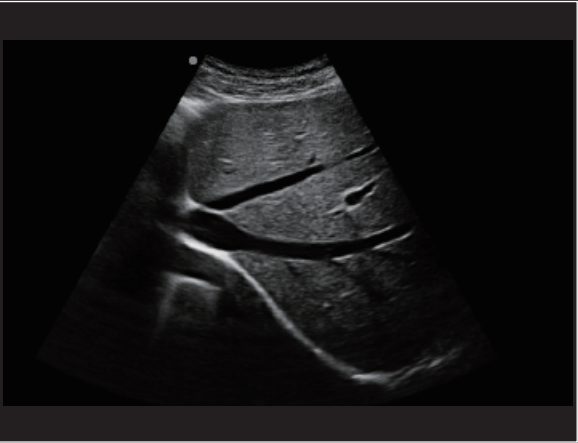
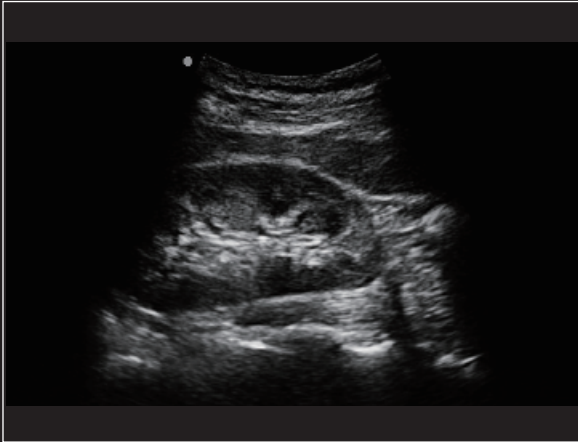
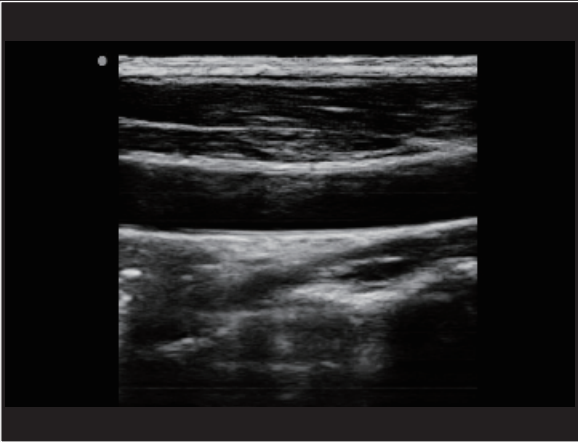
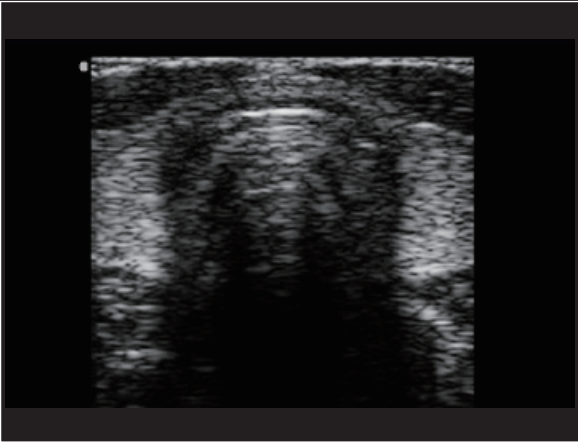
- The diagnostic instrument uses microcomputer control and digital scan converter (DSC).
- Uses digital beamforming (DBF).
- Frame correlation and other technologies, the whole image is clear, stable, high resolution.
- With B, B + B, 4B, B + M, M five kinds of display modes; image grayscale 256.

## Real-time Dynamic Exam

- Real-time dynamic aperture imaging (RDA).
- Real-time dynamic sound velocity apodization (DRA).
- Real-time dynamic spot-Dynamic Frequency Scanning (DFS).

=====

# Clinical image cases





**Convex probe**

Application: Abdomen, Obstetrics,  
Gynecology



**Linear probe**

Application: Small Parts, Vascular,  
Musculoskeletal



**Trans-rectal probe**

Application: prostate gland



**Micro-convex probe**

Application: Small parts, baby organs



**Trans-vaginal probe**

Application: Obstetrics, Gynecology,  
Urology

# Part of the probe display

---

---