

DW-580

The Health Is Within Reach



Full digital ultrasonic diagnostic system

The DW-580 is equipped with advanced imaging technologies to provide you with high-quality images and a convenient workflow that allows you to scan with confidence and ease.

With its lightweight, laptop-like design, the DW-580 takes you wherever you need it.



Innovative Design

- 12.1-inch professional medical LCD monitors make the images more intuitive.
- Back-lit keyboard silicon gel, more comfortable and wearable, no trouble in using in the darkroom.



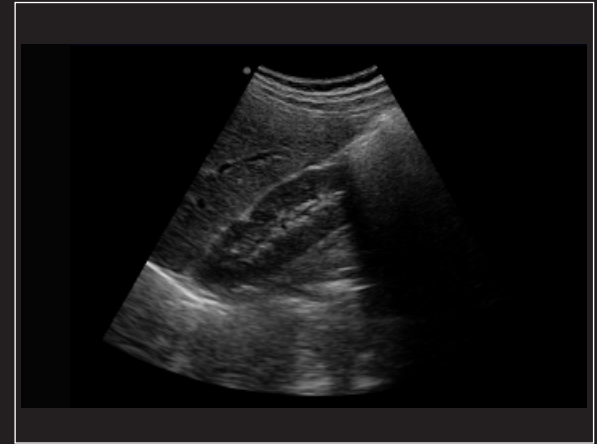
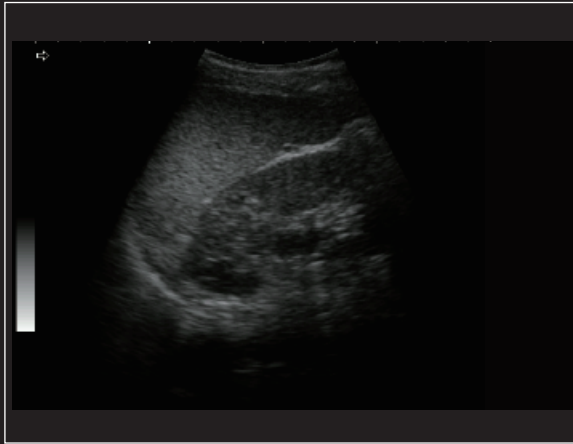
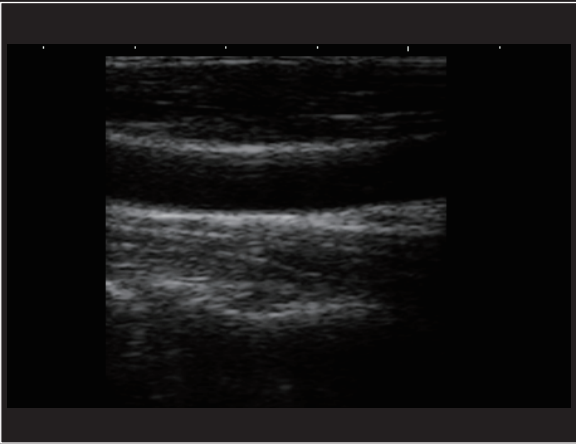
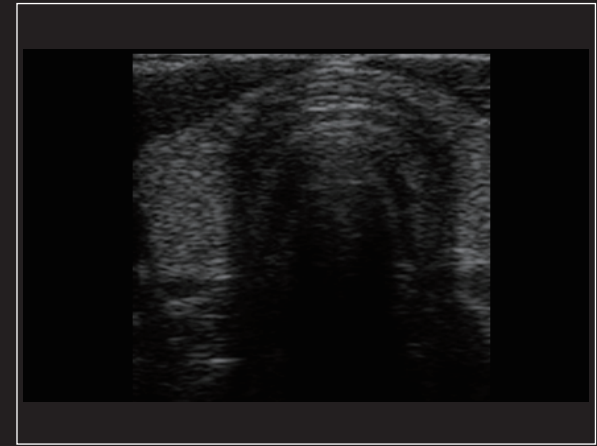
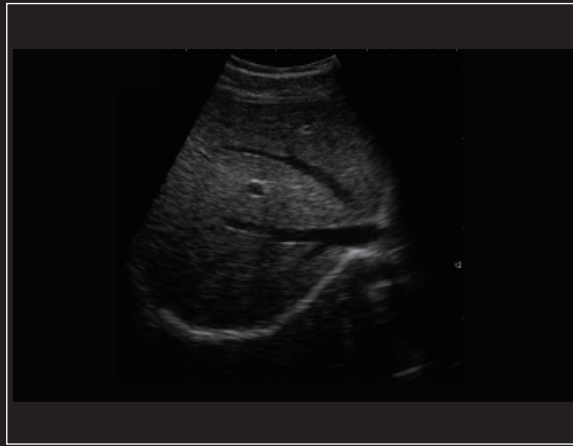
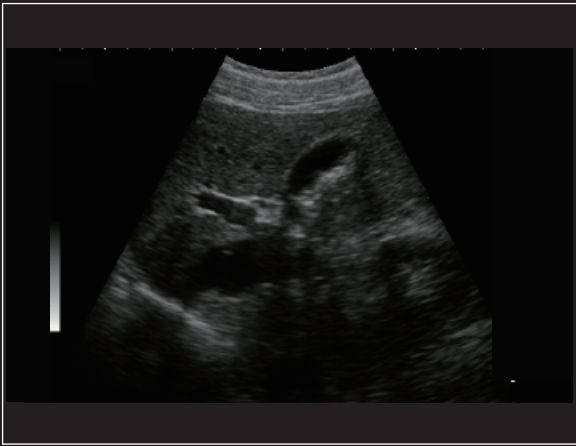
Efficient Diagnosis

- The diagnostic instrument uses microcomputer control and digital scan converter (DSC).
- Uses digital beamforming (DBF).
- Frame correlation and other technologies, the whole image is clear, stable, high resolution.
- With B, B + B, 4B, B + M, M five kinds of display modes; image grayscale 256.

Real-time Dynamic Exam

- Real-time dynamic aperture imaging (RDA).
- Real-time dynamic sound velocity apodization (DRA).
- Real-time dynamic spot-Dynamic Frequency Scanning (DFS).

Clinical image cases





Convex probe

Application: Abdomen, Obstetrics,
Gynecology



Linear probe

Application: Small Parts, Vascular,
Musculoskeletal



Trans-rectal probe

Application: prostate gland



Micro-convex probe

Application: Small parts, baby organs



Trans-vaginal probe

Application: Obstetrics, Gynecology,
Urology

Part of the probe display
